



I am going to visit the Charles White Elementary School LACMA Gallery.

The gallery is a place to see art and make art.

It is free to visit and no ticket is required.

The gallery is open on select Saturdays from 12–4pm.

I may travel to the gallery either as a pedestrian, by metro, or by car.



If I drive today, I may park for free in a multi-story parking garage. The address is 611 S. Carondelet Street, Los Angeles, CA 90057.



I will take a ticket from the machine and park on the 2nd level or above. I will park in a space that is reserved for Charles White Elementary School or is unreserved. I will hold on to my parking ticket so I may get it validated by a LACMA security guard when I visit the gallery.



After I park, I will exit the parking garage by taking the elevator, stairs, or going down the motor ramp.



After exiting the garage, I will use the crosswalk to go across Carondelet Street and towards Wilshire Boulevard.



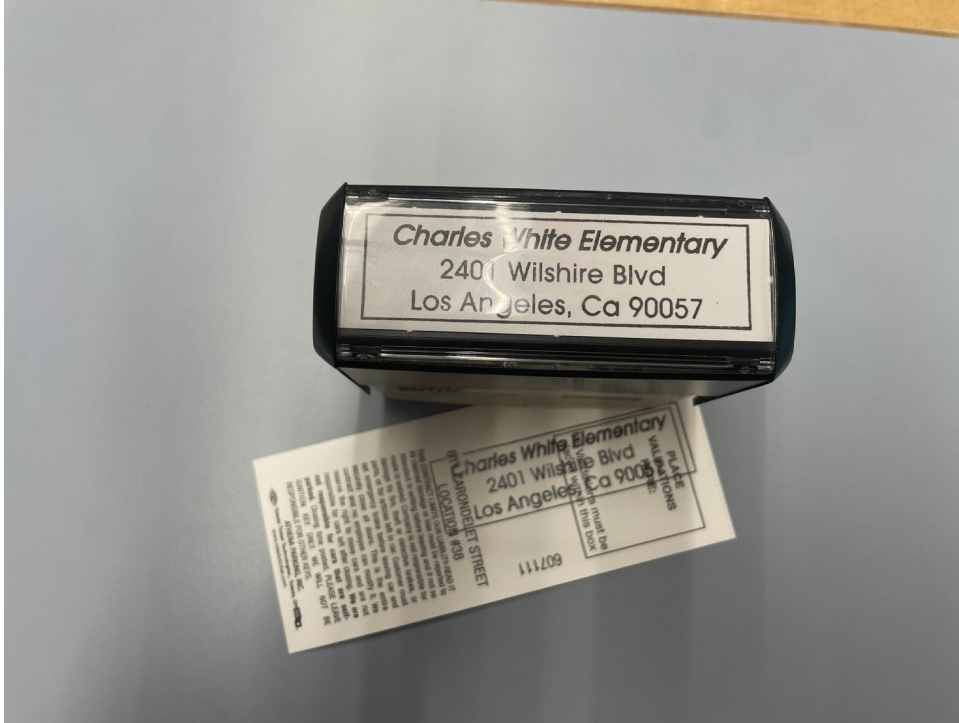
I will turn left on Wilshire Boulevard and go east towards MacArthur Park. The entrance to the gallery is on my left at the end of the block.

I may also park in a metered parking spot on the street. I will make sure to check the parking signs and pay the metered parking fee.

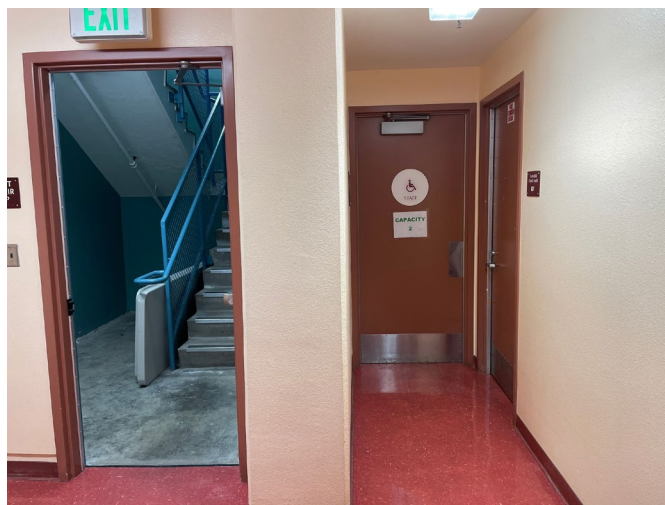


When I arrive at the gallery, I may go up the ramp or the stairs to reach the gallery entrance.

When I arrive at the door, a LACMA security officer in a uniform will welcome me. There may be art or an installation just behind the entry door.



If I need it, the LACMA security guard will validate my parking ticket with a stamp.



If I need to use the restroom during my visit, I will take the stairs down to the basement or ask the security guard for help using the elevator.



Installation photograph, *Nature on Notice: Contemporary Art and Ecology*, Charles White Elementary School Gallery, Dec 21, 2024–Aug 2, 2025, photo © Museum Associates/LACMA

When I am ready, I may enter the gallery and look at the art! Every year there is a different exhibition and something new to see. The photo above is an example of what I might see. There may be art on the walls and on the floor. There are multiple ways to go through the gallery: I can go to the left or right. There are several rooms to visit.



Installation photograph, *Dining with the Sultan at Charles White Elementary School*, Los Angeles County Museum of Art, Jan 20–Aug 10, 2024, photo © Museum Associates/LACMA

I may also see art on tables with glass around them. I will look at the art but I will not touch it. The text near the artwork tells me more about it.



In the back of the gallery is an art studio! On select days, a LACMA staff member will be there. They will guide me in an art activity if I want to make art during my visit.



When I am ready to leave, I will exit the doors through which I came in.

Thank you for visiting!

---

Unless otherwise noted, all photos © Museum Associates/LACMA, by Holly Gillette and Danny Gonzalez